

**Netrin 1 Antibody**  
**Rabbit mAb**  
**Catalog # AP91921****Specification**

---

**Netrin 1 Antibody - Product Information**

Application	WB, ICC
Primary Accession	<a href="#">O95631</a>
Reactivity	Rat
Clonality	Monoclonal
<b>Other Names</b>	
Netrin1; NTN1; NTN1L; Unc6;	
Isotype	Rabbit IgG
Host	Rabbit
Calculated MW	67748 Da

**Netrin 1 Antibody - Additional Information**

Dilution	WB~~1:1000 ICC~~N/A
Purification	Affinity-chromatography
Immunogen	A synthesized peptide derived from human Netrin 1
Description	Netrins control guidance of CNS commissural axons and peripheral motor axons. Its association with either DCC or some UNC5 receptors will lead to axon attraction or repulsion, respectively.
Storage Condition and Buffer	Rabbit IgG in phosphate buffered saline , pH 7.4, 150mM NaCl, 0.02% sodium azide and 50% glycerol. Store at +4°C short term. Store at -20°C long term. Avoid freeze / thaw cycle.

**Netrin 1 Antibody - Protein Information****Name** NTN1**Synonyms** NTN1L**Function**

Netrins control guidance of CNS commissural axons and peripheral motor axons. Its association with either DCC or some UNC5 receptors will lead to axon attraction or repulsion, respectively. Binding to UNC5C might cause dissociation of UNC5C from polymerized TUBB3 in microtubules and thereby lead to increased microtubule dynamics and axon repulsion (PubMed:<a href="http://www.uniprot.org/citations/28483977" target="\_blank">28483977</a>). Involved in dorsal root ganglion axon projection towards the spinal cord (PubMed:<a href="http://www.uniprot.org/citations/28483977" target="\_blank">28483977</a>). It also serves

as a survival factor via its association with its receptors which prevent the initiation of apoptosis. Involved in tumorigenesis by regulating apoptosis (PubMed:<a href="http://www.uniprot.org/citations/15343335" target="\_blank">15343335</a>).

**Cellular Location**

Secreted. Cytoplasm. Note=Mainly secreted

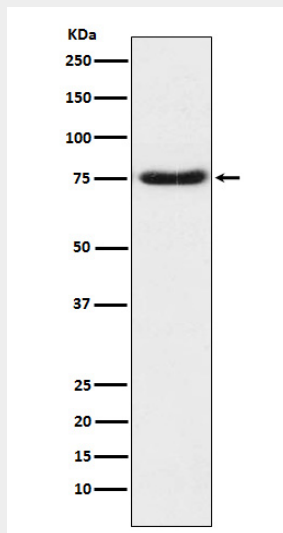
**Tissue Location**

Widely expressed in normal adult tissues with highest levels in heart, small intestine, colon, liver and prostate Reduced expression in brain tumors and neuroblastomas. Expressed in epididymis (at protein level).

**Netrin 1 Antibody - Protocols**

Provided below are standard protocols that you may find useful for product applications.

- [Western Blot](#)
- [Blocking Peptides](#)
- [Dot Blot](#)
- [Immunohistochemistry](#)
- [Immunofluorescence](#)
- [Immunoprecipitation](#)
- [Flow Cytometry](#)
- [Cell Culture](#)

**Netrin 1 Antibody - Images**

Western blot analysis of Netrin 1 expression in Human fetal brain lysate.